

PATCH AUTHORITY ULTIMATE™

Patch Authority Ultimate, ScriptLogic's comprehensive, enterprise-class patch management solution, enhances security and centralizes the process of updating Windows desktops and servers, no matter where they are. Patch Authority Ultimate eases the task of deploying the very latest patches to desktops and servers, and tightens security in a few simple steps.

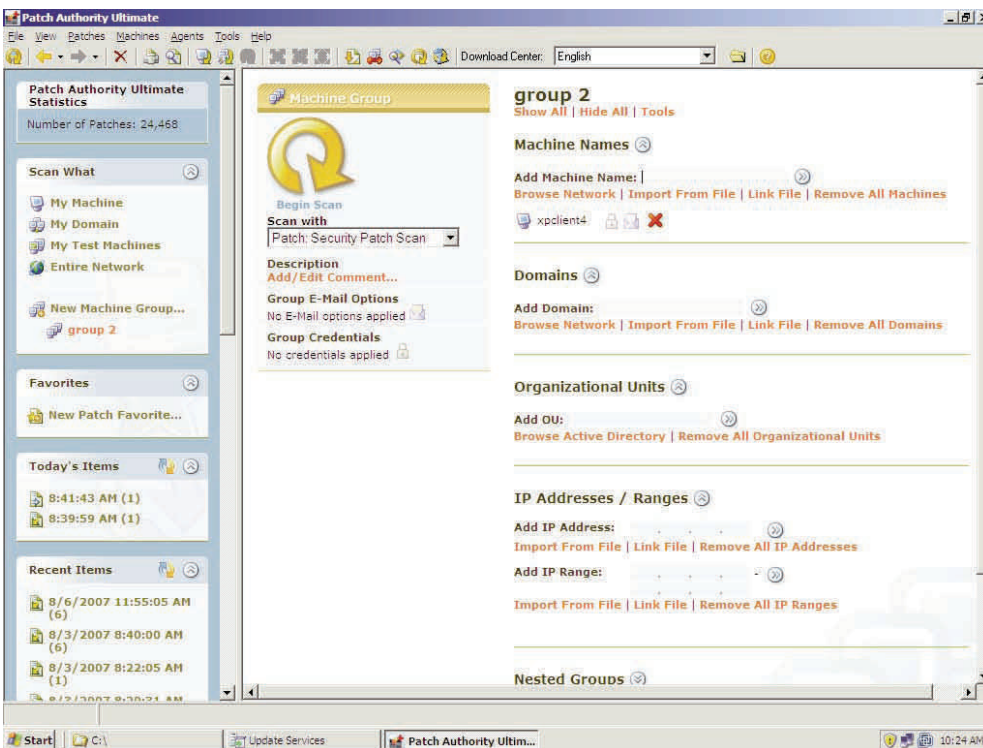
With exploits for known vulnerabilities unleashed on the Internet within as little as 5 days from the release of new patches from Microsoft, it is imperative your desktops and servers be regularly updated to keep them safe from attack.

SCALABLE SOLUTION

With Patch Authority Ultimate (PAU), administrators can patch all desktops and servers from a single, easy to use interface, across the network and even the Internet. PAU's intuitive interface makes real-time scanning and patch deployment a cinch, but it can also be scaled to a 100,000 machine enterprise using agent and agent-less deployment, Patch Groups to group machines, Aggregated Reporting to roll-up reports to the executive level, Distribution Servers for localized deployment, and Deployment Templates for defining the what, how and when of patch deployment.

COMPREHENSIVE PATCHING

Powered by Shavlik's industry-recognized technology, PAU patches desktops and servers with all available OS and application-specific patches. Patches can be deployed instantly from an interactive console, or scheduled for deployment at the most suitable time, with extensive control over reboot options.



Patch Authority Ultimate's simple interface empowers you to quickly select, scan, deploy patches.

KEY BENEFITS

- Enhance Security**
Protect desktops and servers from attacks that exploit un-patched computers.
- Complete Coverage**
Mix agent-based and agent-less deployment to reach every user, together with support for the latest applications and Windows OS releases.
- Enterprise-Class Management**
Scan 256 machines at once and aggregate reporting from all consoles. Selection, Deployment and Reporting features cover the entire patch management cycle.
- Less Downtime, Tight Password Control**
Maintain the health and security of Windows services across the enterprise before and after patches are applied.

KEY FEATURES

- NEW!** **Agent-based or Agent-less Patching**
Choose the appropriate patch management method. For mobile users, you can install a self-protecting agent. For LAN-based users, agent-less patching is often preferable.
- NEW!** **Custom Patches**
Perform patch management functions for custom or third party applications and patches that are specific to your business.
- NEW!** **Role-Based Administration**
Enable delegation of responsibility to perform scans, deployments, and report generation amongst a variety of individuals within your organization.
- Manage Windows Services**
Centralize administration and management of services on desktops and servers, including rapid update of service account passwords.
- Granular Machine Selection**
Use Active Directory OUs, IP Address ranges, System Type, Server (such as IIS or SQL), or imported list to determine which machines will be grouped for management.

- Reboot Control**
Choose to reboot before or after patch, or when the user next logs off or shuts down. Optionally permit deferred installs and user overrides.

PATCH AUTHORITY ULTIMATE™

EASE OF USE

With Patch Authority Ultimate, patching servers and desktops can be done in as little as 2 clicks: scan, and then deploy. But behind the simplicity are options to get as granular and exercise as much control as you like, with patch grouping, computer grouping and filtering, Agent management, and extensive reboot options.

ADVANCED REPORTING

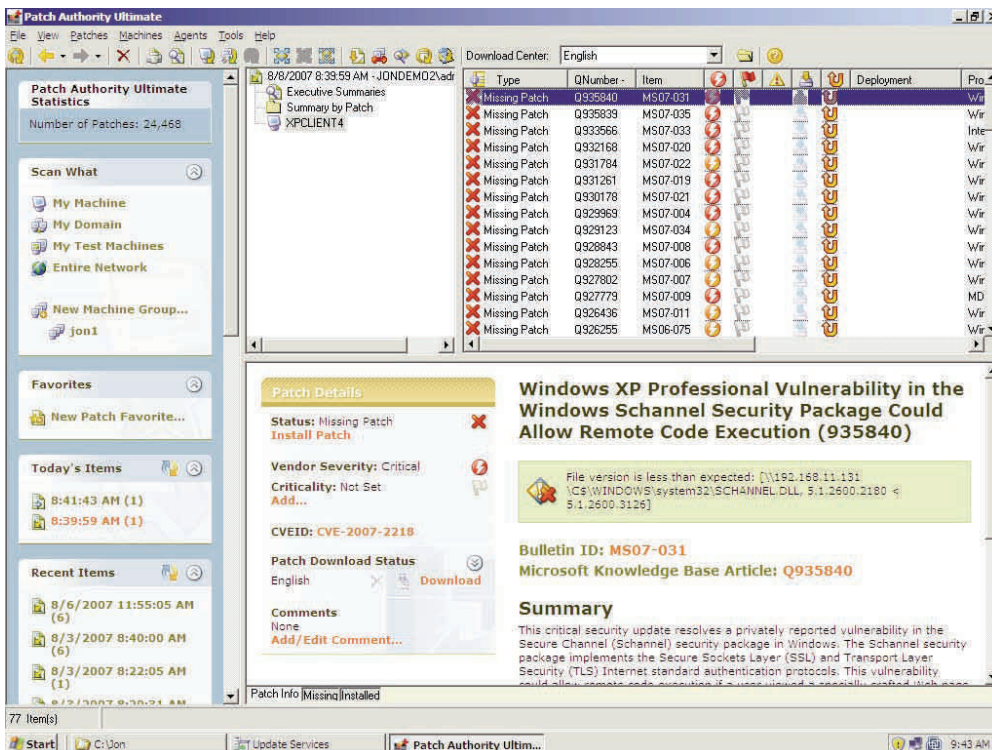
A complete patch management solution must let executives, compliance officers and administrators gain a full understanding of the state of security on their network. Patch Authority Ultimate comes with over 20 reports providing vital information regarding patches, scans and deployment results.

EXTENSIVE COVERAGE

With Patch Authority Ultimate, administrators are not limited to just patching the latest Microsoft products. Support out-of-the-box includes many older applications and OS components, and also a growing number of 3rd party applications that have known weaknesses, including Adobe Reader, WinZip and Real Player.

INCREASED SECURITY

To further secure your desktops and servers, Patch Authority Ultimate is bundled with Security Explorer, which gives administrators the power to simultaneously manage and secure the Services and Tasks on multiple servers and desktops running Windows NT/2000/XP/2003/Vista/2008. Services on multiple computers can be started, stopped, restarted and deleted, and startup settings and passwords can be easily controlled from a single interface, keeping your desktops and servers compliant with your company's password and configuration policies and ensuring that services run smoothly after patching.



Patch Authority Ultimate's comprehensive approach to patching includes robust reporting.

F.A.Q

Why "Ultimate"?

Patch Authority Ultimate comes with Security Explorer for the most complete management of patches and services.

Is an Evaluation Available?

Yes! A fully-functional 30-day evaluation download is available at scriptlogic.com and will manage 10 machines.

Is this the same as Desktop Authority's Patch Deployment for Desktops Option?

No. The Patch Deployment for Desktops (PDD) option is only available with Desktop Authority and provides patch deployment to desktop machines only.

Can I patch mobile users at home?

Yes! The Patch Authority Ultimate Agent calls home to your distribution servers using HTTP or SSL and applies patches according to your central policies.

SYSTEM REQUIREMENTS

Management

Windows 2000 SP3/2003/XP/Vista/2008 with IE 5.5 or later. 2GB+ disk space required for patch repository.

Client Support

Patch Authority Ultimate supports Windows NT4/2000/XP/2003/Vista/2008 client and server operating systems.

Language Support

Patch Authority Ultimate can deploy patches for the following languages: Arabic, Chinese (Simplified), Chinese (Traditional), Czech, Danish, Dutch, English, Finnish, French, German, Greek, Hebrew, Hungarian, Italian, Japanese, Korean, Norwegian, Polish, Portuguese (Brazil), Portuguese (Portugal), Russian, Spanish, Swedish, Turkish

LICENSING

Patch Authority Ultimate is licensed on a per-computer basis. Licenses are available to patch both desktops and servers.

For pricing, contact your ScriptLogic reseller or call ScriptLogic at **1.800.813.6415**